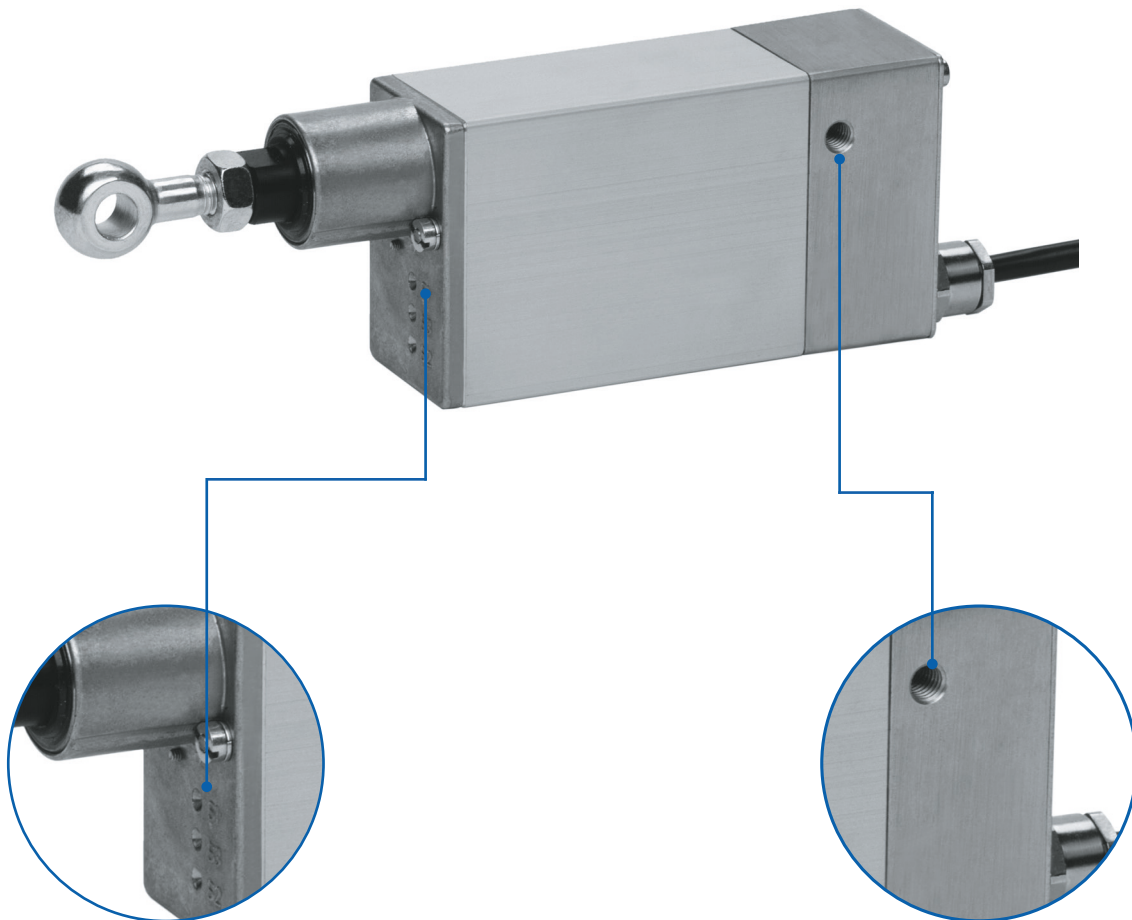


M10, LH10, LH11, LH950 Electric cylinder



Adjustable stroke lengths (not available with M10)

✓ Precise adjustment

Tapped holes

✓ Thread for trunnion mounting

Features:

- Integrated limit switch
- Maintenance-free (permanent lubrication)
- Iron free high-performance motors
- Various travel speeds
- Can be installed in any position

Options:

- Other travel speeds, special stroke lengths
- Potentiometer (only available with LH10, LH11, LH 950)
- 3rd limit switch enables centre position (only available with LH10, LH11, LH 950)
- Corrosion protected screw and push rod

General information/operating conditions

	M 10	LH 10	LH 11	LH 950
Design	Linear cylinder with integrated DC motor			
Guide				Slide bush
Installation position	Any position, without shear forces			
Push force/Pull force	Up to 300 N	Up to 300 N	Up to 300 N	Up to 500 N
Self-locking	Up to 500 N	Up to 500 N	Up to 500 N	Up to 1,250 N
Ambient temperature	-20°C to +60°C	-20°C to +60°C	-20°C to +80°C	-20°C to +80°C
Repeatability	0.5 mm			
Duty cycle (at max. load)	at 20°C 40% at nominal load (max. 8 mins operating time, 12 mins rest time)			
Voltage	24 (12) V DC			
Current output	Max. 1.1 A			
Power input	Max. 27 W			
Protection class	IP 40	IP 54	IP 54	IP 54

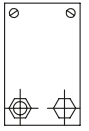
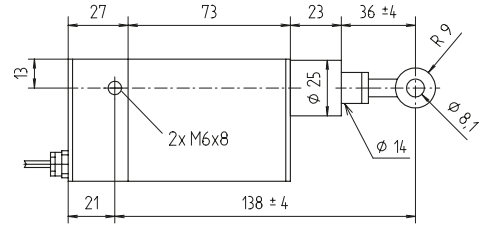
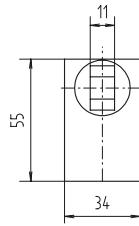
Version

Code No.	Type	Max. force F [N]	Max. speed [mm/s]	Stroke length [mm]	Weight [kg]
QKB01_C010040	M 10	300	0.25	40	0.45
QKB02_C010040		300	1.9		
QKB04_B010040		200	4		
QKB10_A010040		50	10		
QKM01_C010090	LH 10	300	0.25	90	0.55
QKM02_C010100		300	1.9		
QKM04_B010100		200	4		
QKM10_A010100		50	10		
QKN07_C010100	LH 11	300	7	100	0.75
QKN22_A010100		100	22		
QKR04_E010100	LH950	500	4	100	1.15

Voltage:
B = 24 V DC
c = 12 V DC

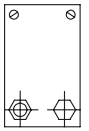
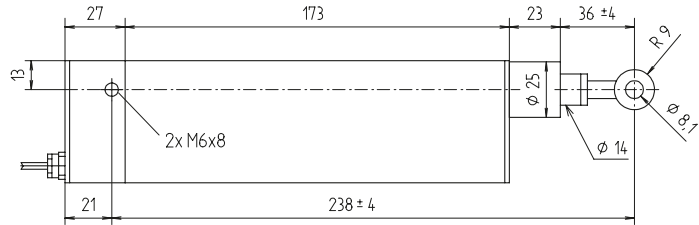
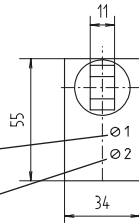
M10, LH10, LH11, LH950 - Versions

M 10



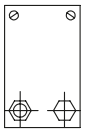
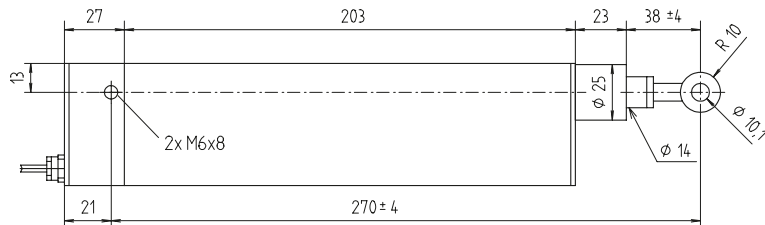
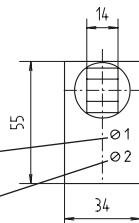
LH 10

Adjustment of stroke length
Adjustment of installation dimension



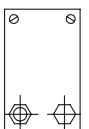
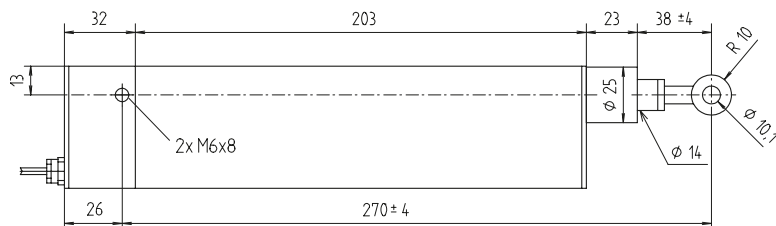
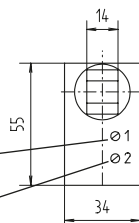
LH 11

Adjustment of stroke length
Adjustment of installation dimension



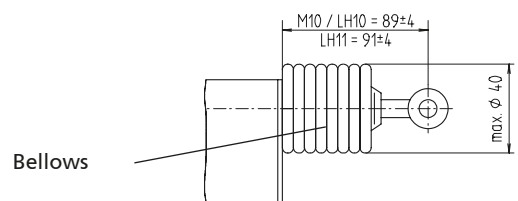
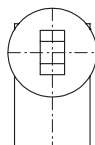
LH 950

Adjustment of stroke length
Adjustment of installation dimension

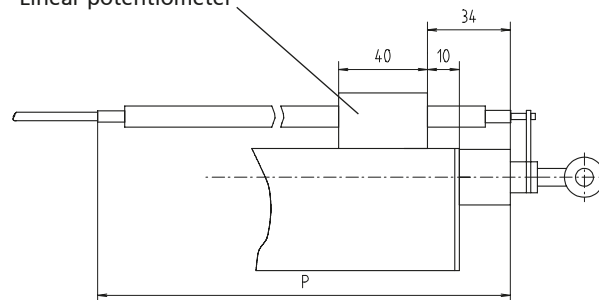


Options:

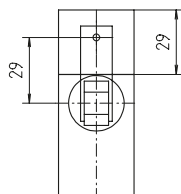
Bellows



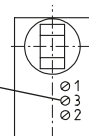
Linear potentiometer



External potentiometer



3rd limit switch (for intermediate positions)

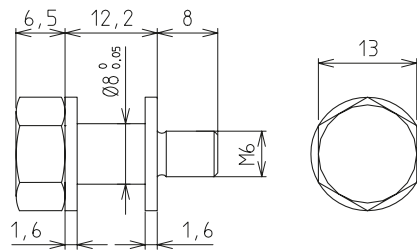


	[mm]			
Stroke length	15	40	90	100
Dimension P	105	130	180	205

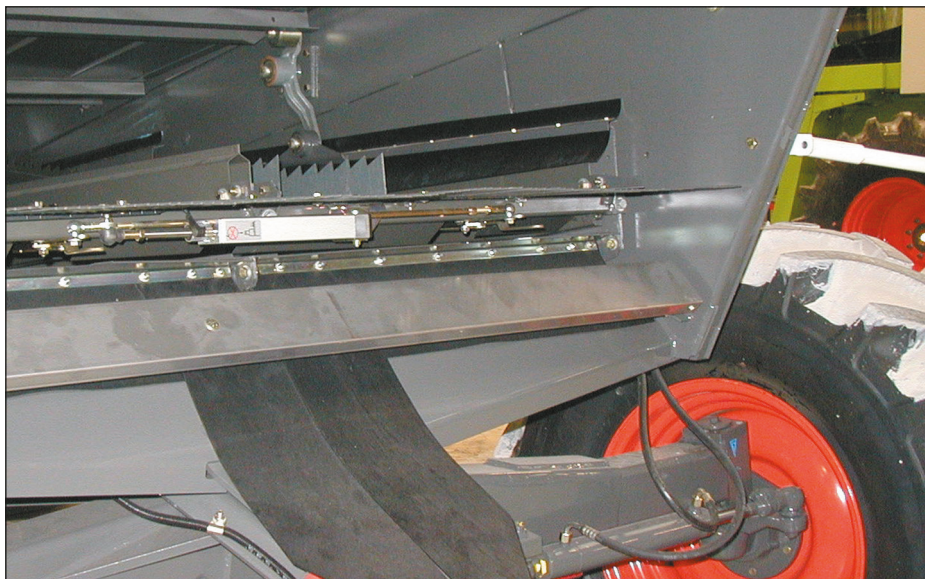
Trunnion kit

- The trunnion is bolted into the thread in the side of the electric cylinder
- Each kit comprises two trunnions

- **Material:** zinc plated steel



Code No.	Type
QZD050003	Trunnion kit



Adjustment of combine harvester sieve via series 010 electric cylinder. Ideal for use in harsh conditions (heat, dust and vibrations).