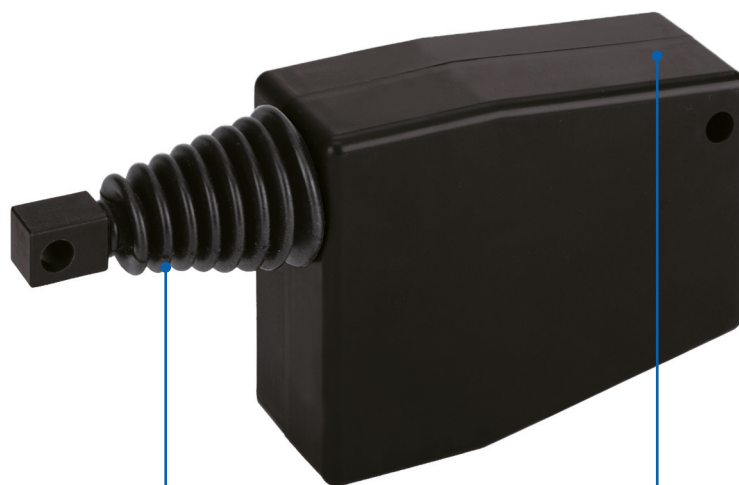
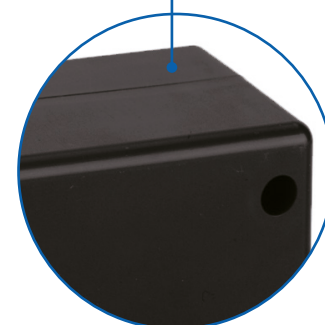


M9 Electric cylinder



Bellows fitted as standard

- ✓ Protected push rod
- ✓ IP 30



Plastic housing

- ✓ Lightweight
- ✓ Greater durability

Features:

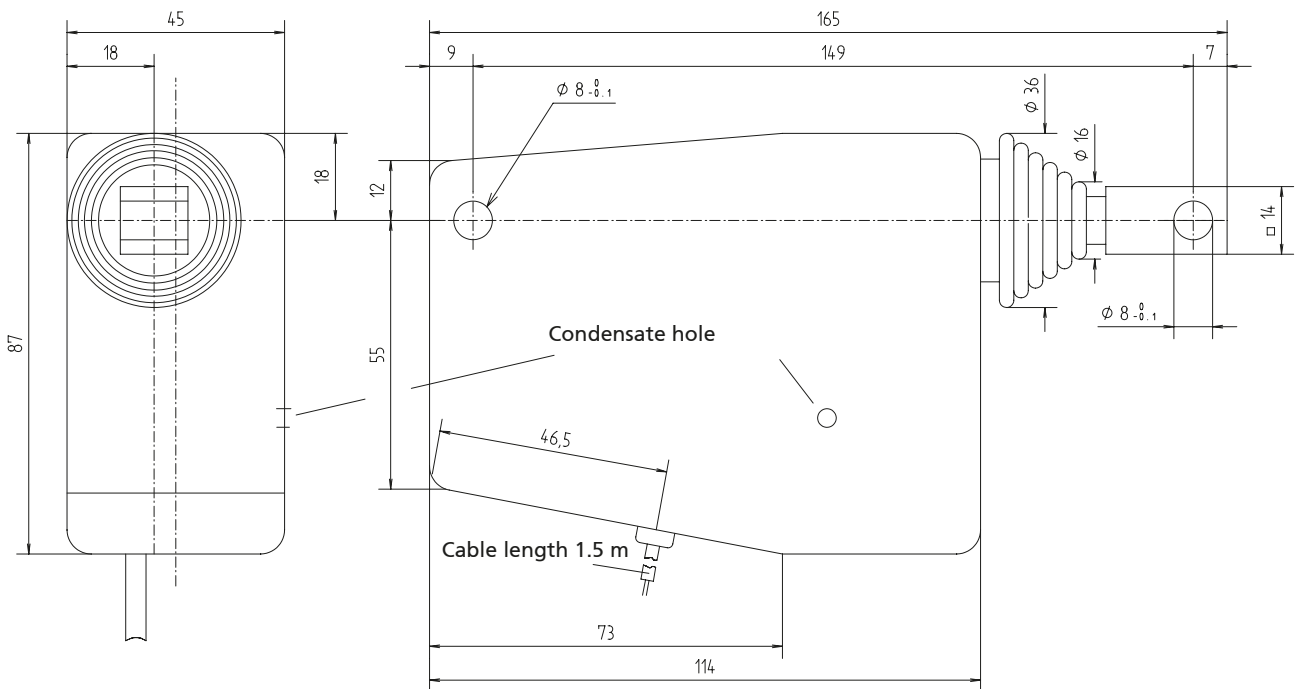
- Plastic housing reduces weight
- Integrated limit switches
- Integrated overcurrent protection
- Maintenance-free (permanent lubrication)
- Self-locking
- M9 is fitted with bellows as standard

Options:

- Special stroke lengths
- Adjustable overall length
- Potentiometer
- Signal contacts
- Diode braking circuit to limit coasting
- Different temperature range

General information/operating conditions

Design	Linear cylinder with integrated DC motor
Guide	Slide bearing
Installation position	Any position, without shear forces, condensate hole must be taken into account
Push force / Pull force	Up to 300 N
Self-locking	Up to 500 N
Ambient temperature	-10°C to +60°C
Repeatability	0.5 mm
Duty cycle (at max. load)	10% at nominal load (max. 2 mins operating time, 18 mins rest time)
Voltage	24 (12) V DC
Current output	Max. 0.7 (1.4) A
Power input	Max. 18 W
Protection class	IP 30



Version

Code No.	Type	Max. force F [N]	Max. speed [mm/s]	Stroke length [mm]	Weight [kg]	Operating cycles Double strokes/hour
QKA05_C010050	M 999	300	5	50	0.4	18
QKA15_A010050	M 999.1	125	14			50
QKA02_C010050	M 999.2	300	2			7

Voltage:
 B = 24 V DC
 C = 12 V DC